

PART CATALOGUE

PG-8720IXX

VERSION No. : BM20131202

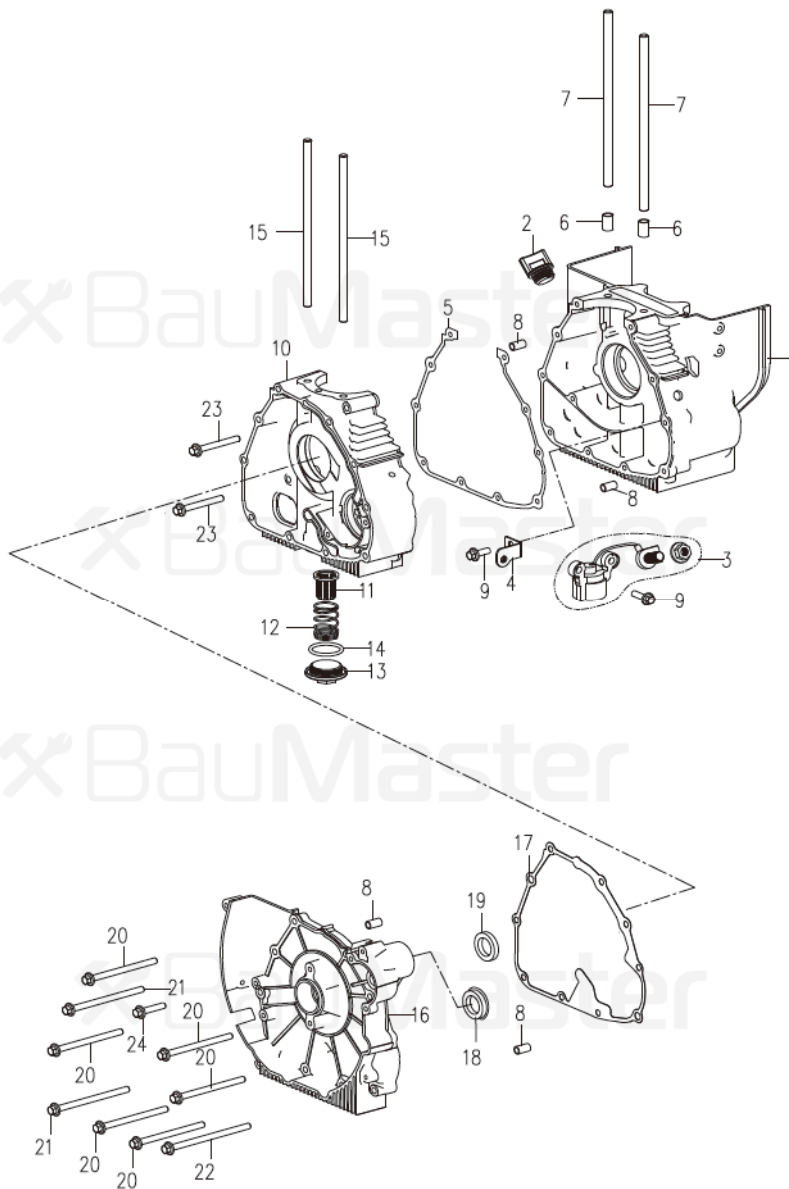


FIG.A CRANKCASE ASSY

No.	Description
1	LEFT CYLINDER BLOCK
2	OIL PLUG ASSEMBLY
3	OIL SENSOR ASSEMBLY
4	OIL SENSOR LEVER
5	CO-BOX GASKET
6	DOWEL PIN 10X15.7
7	LONG STUD 8X195
8	DOWEL PIN 8X4
9	BOLT M6X18
10	RIGHT CYLINDER BLOCK
11	OIL-FILTER COMPONENT
12	OIL-FILTER SPRING
13	OIL-FILTER CAP
14	O-RING30.5X3
15	LONG STUD 8X185.5
16	RIGHT COVER
17	WASHER
18	PLUG
19	OIL SEAL 19.8x30x5
20	HEXAGON FLANGE BOLTS M6x80
21	HEXAGON FLANGE BOLTS M6x90
22	HEXAGON FLANGE BOLTS M6x100
23	HEXAGON FLANGE BOLTS M6x50

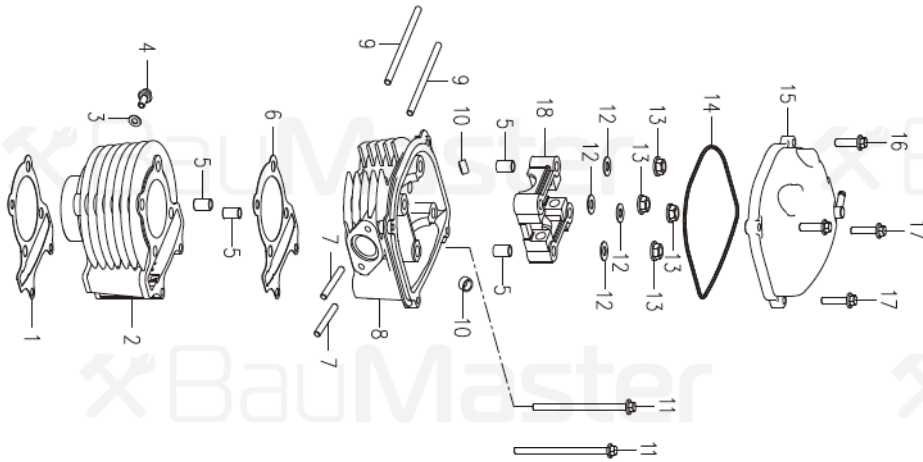


FIG.B CYLINDER HEAD

No.	Description
1	CYLINDER GASKET
2	CYLINDER COMPONENT
3	GASKET 6
4	HEXAGON FLANGE BOLTS M6×12
5	DOWEL PIN 10X15.7
6	CYLINDER HEAD GASKET
7	STUD BOLT M6X32
8	CYLINDER HEAD COMPONENT
9	STUD BOLT M6X118
10	VALVE OIL SEAL COMPONENT
11	HEXAGON FLANGE BOLTS M6×100
12	COPPER WASHER 8
13	HEXAGON NUTS WITH FLANGE M8
14	SEAL RING
15	CYLINDER HEAD COVER
16	HEXAGON FLANGE BOLTS M6×25
17	HEXAGON FLANGE BOLTS M6×35
18	CAMSHAFT HOLDER SEAT

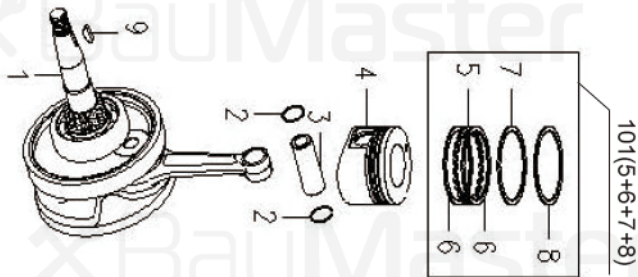


FIG C. CRANKSHAFT PISTON

No.	Description
1	CRANKSHAFT CONNECTING ROD ASSY
2	PISTON PIN CLIP
3	PISTON PIN
4	PISTON
5	OIL RING
6	OIL RING CLIP
7	GAS SEAL RING
8	CHROME GAS SEAL RING
9	WOODRUFF KEY
101	PISTON RING ASSEMBLY(5+6+7+8)

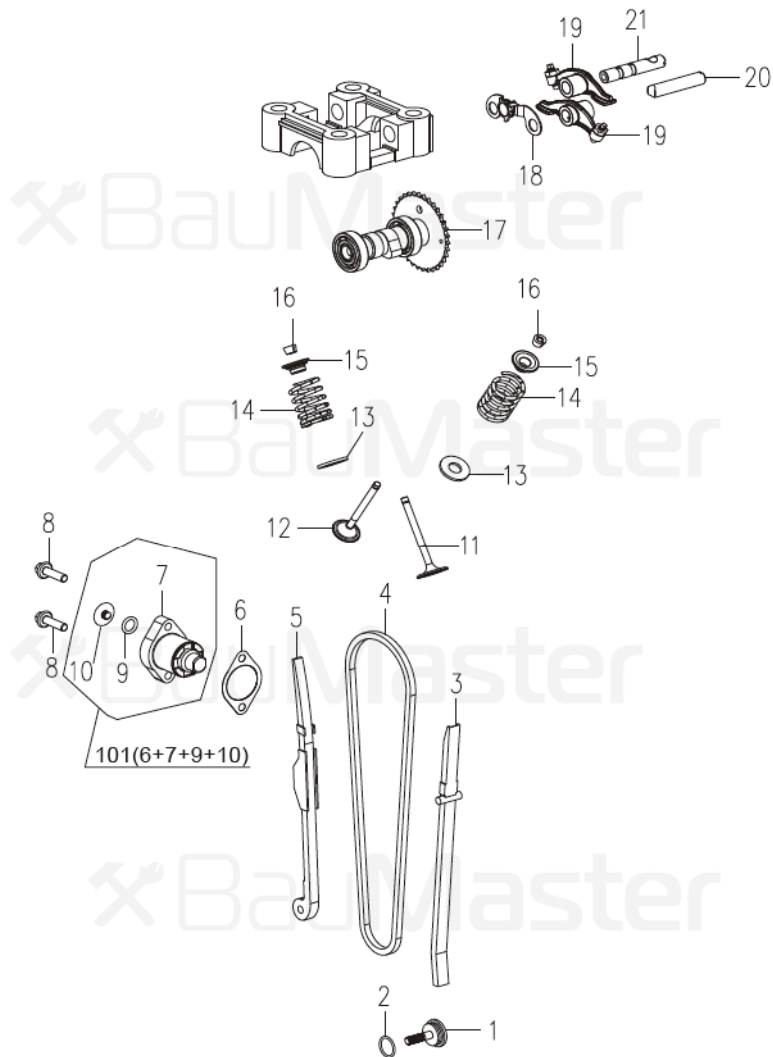


FIG D. CAMSHAFT

No.	Description
1	TENSION ROD BOLT
2	O-RING 15.2X1.5
3	CAMSHAFT CHAIN GUIDE PARTS
4	CAMSHAFT CHAIN 6.35×90
5	TENSION ROD ASSY
6	REGULATOR GASKET
7	CAMSHAFT CHAIN REGULATOR
8	HEXAGON FLANGE BOLTS M6×22
9	O-RING 9X1.5
10	CROSS-SHAPED HEAD SCREWS
11	EXHAUST VALVE
12	INTAKE VALVE
13	VALVE SPRING SEAT
14	VALVE OUTER SPRING
15	VALVE OUTER SPRING RETAINER
16	VALVE FOLDER
17	CAMSHFT ASSY
18	ROCKSHAFT WASHER
19	VALVE ROCKER ASSY
20	EXHAUST VALVE ROCKSHAFT
21	INTAKE VAVLE ROCKSHAFT ASSY
101	CAMSHAFT CHAIN REGULATOR ASSEMBLY(6+7+9+10)

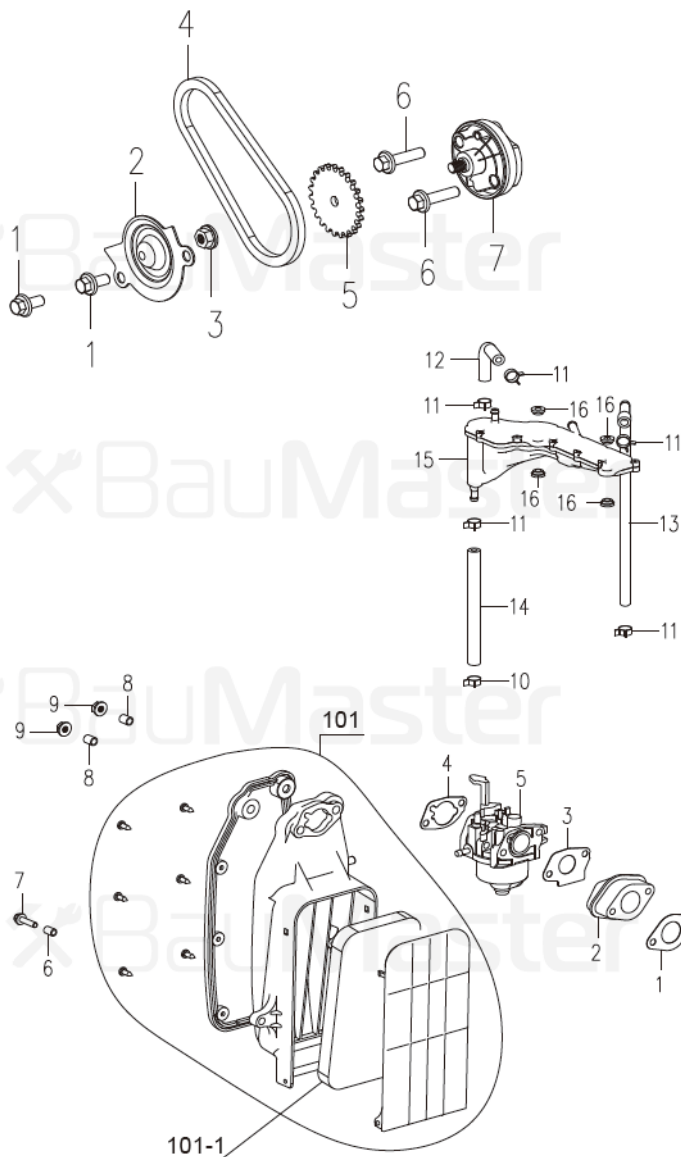


FIG E. OIL PUMP

No.	Description
1	BOLT M6X12
2	OIL PUMP SPROCKET COVER
3	HEXAGON NUTS WITH FLANGE M6
4	OIL PUMP CHAIN 6.35X44
5	OIL PUMP SPROCKET
6	HEXAGON FLANGE BOLTS M6X25
7	OIL PUMP ASSY

FIG F. AIR CLEANER

No.	Description
1	INSULATION GASKET
2	INSULATION COMPONENTS
3	CARBURETOR GASKET
4	AIR CLEANER GASKET
5	CARBURETOR
6	FAN VOLUTE BUSH
7	HEXAGON FLANGE BOLTS M5X20
8	AIR CLEANER BUSH
9	HEXAGON NUTS WITH FLANGE M6
10	CLAMP 11.5
11	CLAMP 10
12	RUBBER TUBE I
13	RUBBER TUBE II
14	RUBBER TUBE III
15	OIL AND GAS SEPARATING UNIT
16	HEAT PAD
101	AIR CLEANER ASSY
101-1	SPONGE

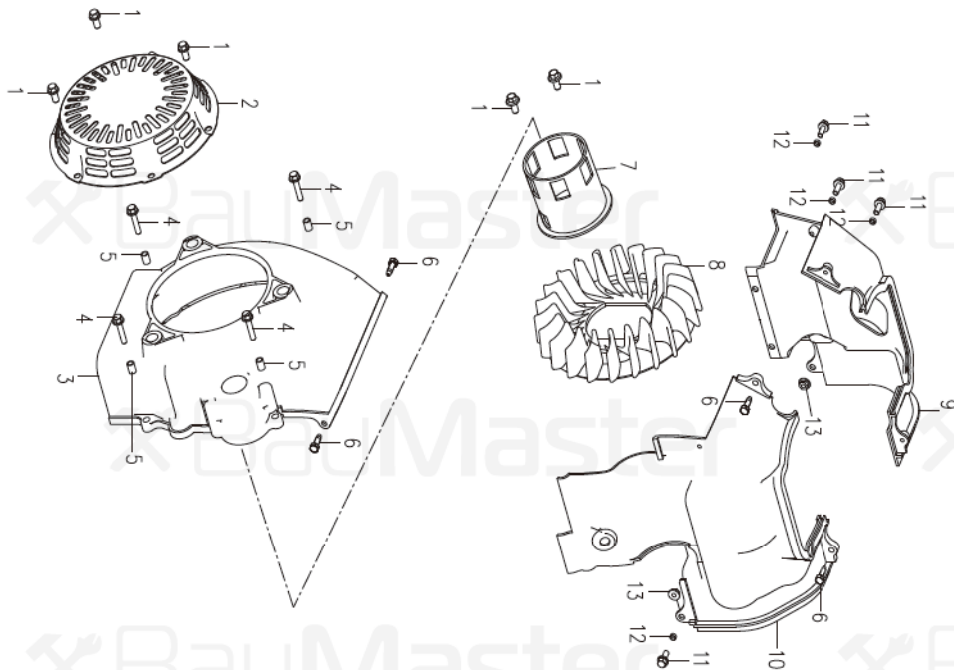


FIG H. RECOIL STARTER

No.	Description
1	HEXAGON FLANGE BOLTS M6×12
2	RECOIL STARTER ASSEMBLY
3	FAN VOLUTE
4	BOLT M5X20
5	FAN VOLUTE BUSH
6	TAP SCREW ST4.8×16-F.H
7	START HUB ASSEMBLY
8	COOLING FAN
9	GUIDE B
10	GUIDE A
11	HEXAGON FLANGE BOLTS M5×12
12	GUIDE BUSH
13	HEXAGON NUTS WITH FLANGE M5

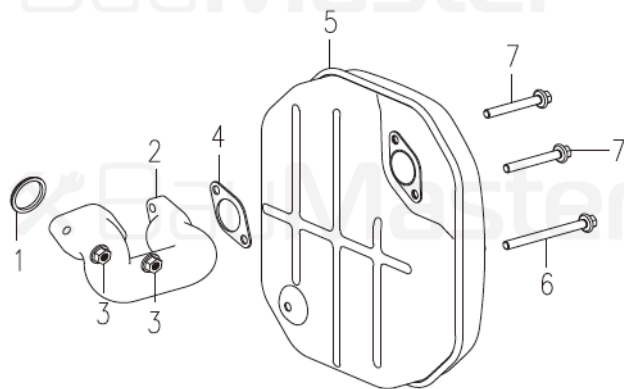


FIG I. MUFFLER

No.	Description
1	MUFFLER PIPE GASKET
2	MUFFLER PIPE
3	HEXAGON NUTS WITH FLANGE M6
4	MUFFLER GASKET
5	MUFFLER ASSY
6	BOLT M6×80
7	BOLT M6×50

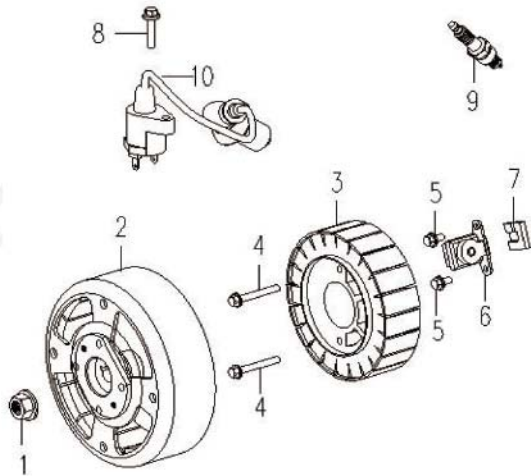
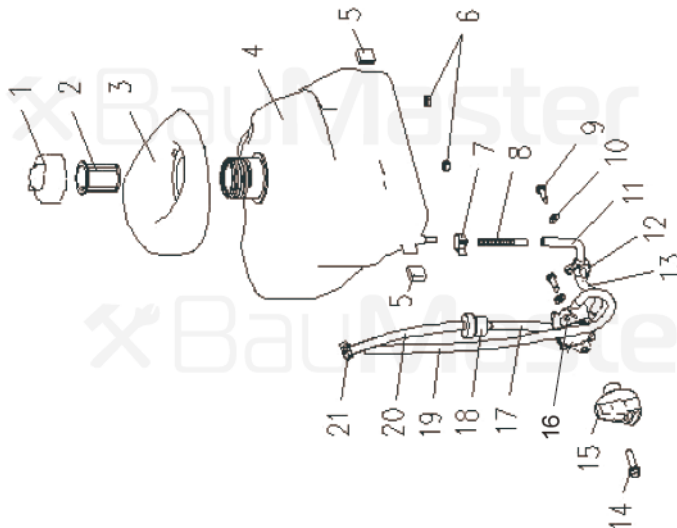


FIG J. GENERATOR

No.	Description
1	HEXAGON NUTS WITH FLANGE M12X1.25
2	ROTOR
3	STATOR
4	HEXAGON FLANGE BOLTS M6×40
5	HEXAGON FLANGE BOLTS M5×15
6	TRIGGER
7	RUBBER BLOCK
8	HEXAGON FLANGE BOLTS M6×25
9	SPARK PLUG A7RTC
10	IGNITION PARTS

FIG K. FUEL TANK

No.	Description
1	FUEL CAP ASSY
2	FUEL FILTER
3	RUBBER FUEL TANK PORT
4	FULE TANK
5	TANK SIDE PAD
6	TANK BASE PAD
7	CLAMP Ø11
8	OUTLET STRAINER
9	TAP SCREW ST4.2×19
10	GASKET Ø4
11	SINGLE-END EXPAND FUEL TUBE
12	FUEL COCK ASSY
13	SPECIAL FUEL TUBE 5×10×115
14	SCREW M4×16
15	FUEL COCK HANDLE
16	FUEL PUMP COMPONENTS
17	FUEL RUBBER HOSE IDØ5.0-ODØ10
18	FUEL FILTER ASSEMBLY
19	FUEL RUBBER HOSE IDØ5.0-ODØ10
20	FUEL RUBBER HOSE IDØ5.0-ODØ10
21	CLAMP Ø9



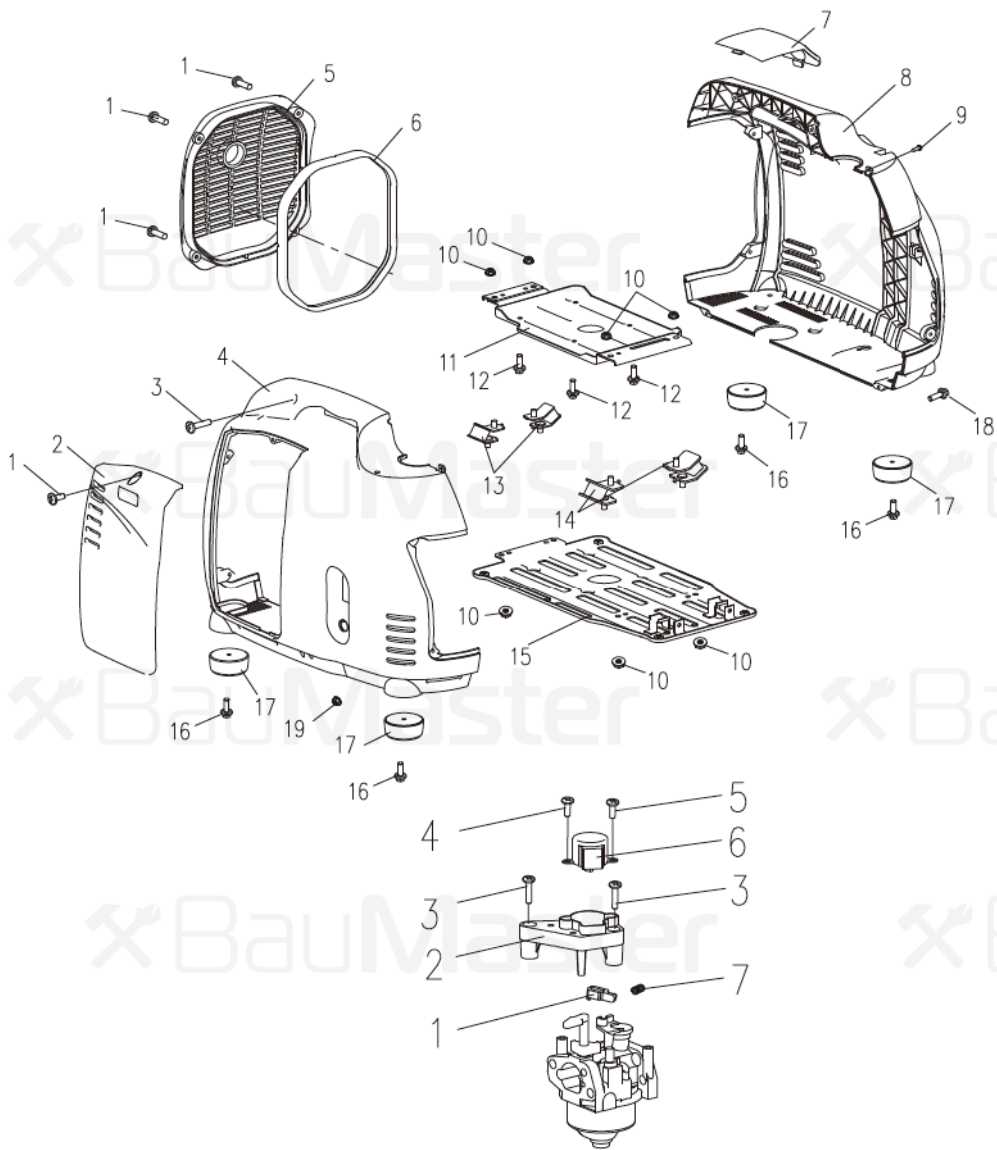


FIG L.

No.	Description
1	PAN HEAD SCREWS M6X12
2	SIDE COVER
3	PAN HEAD SCREWS M6×20
4	RIGHT COVER SHELL
5	MUFFLER COVER
6	MUFFLER COVER PAD
7	UPPER COVER
8	LEFT COVER SHELL
9	TAP SCREW ST4.2×13
10	HEXAGON NUTS WITH FLANGE M8
11	BASE PLATE
12	HEXAGON FLANGE BOLTS M6×16
13	DAMP PAD 1525-2
14	DAMP PAD
15	CHASSIS
16	HEXAGON FLANGE BOLTS M6×16
17	RUBBER DAMP PAD
18	PAN HEAD SCREWS M5X16
19	NUT M5

FIG M. GOVERNOR

No.	Description
1	DRIVE ARM
2	STEPPER MOTOR HOLDER
3	SCREW M4×16
4	SCREW M3×8
5	SCREW M3×5
6	STEPPER MOTOR ASSY
7	DRIVE ARM SPING

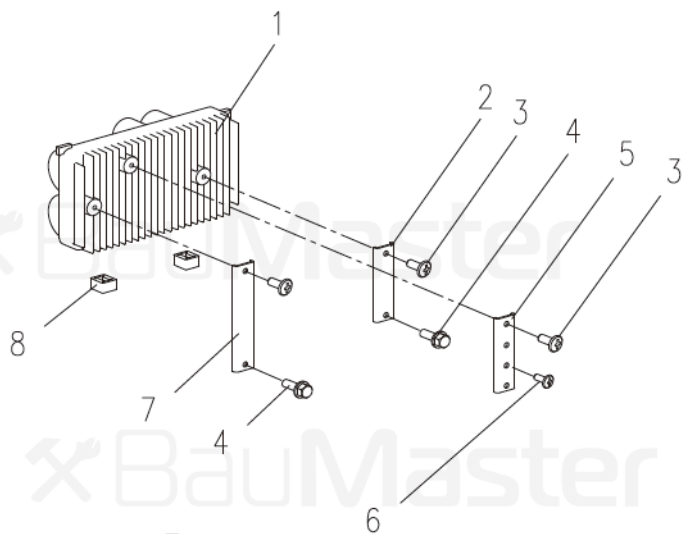


FIG N. INVERTER

No.	Description
1	INVERTER ASSEMBLY 1.8KW 220V 50HZ
2	U-FRAME-1
3	PAN HEAD SCREWS M6x12
4	HEXAGON FLANGE BOLTS M6X12
5	GROUNDING BAR
6	SCREW M5x8
7	U-FRAME-2
8	INVERTER BASE PAD

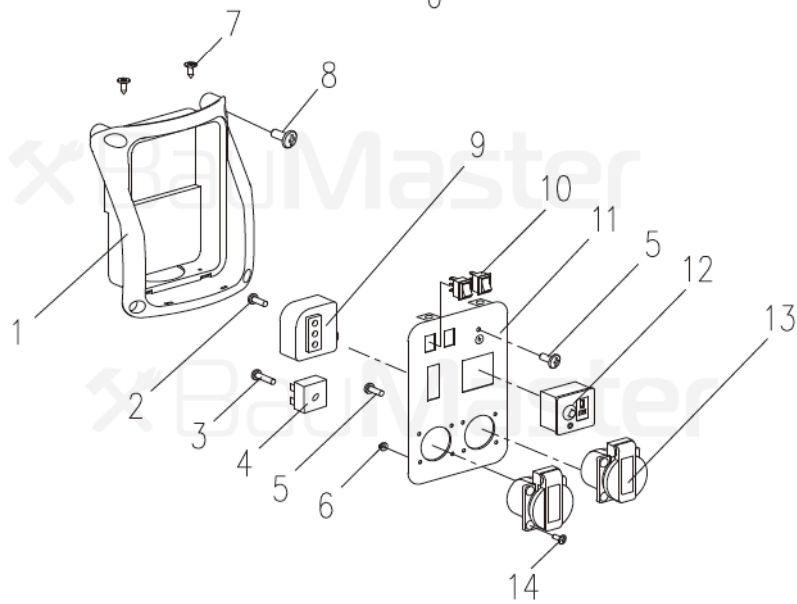


FIG O. CONTROL PANEL

No.	Description
1	PANEL BOX
2	SCREW M5x16
3	SCREW M5x16
4	BRIDGE RECTIFIER KBPC3502
5	SCREW M5x8
6	HEXAGON NUTS WITH FLANGE M4
7	TAP SCREW ST4.2x13
8	PAN HEAD SCREWS M6x12
9	IGNITION CONTROLLER IC-2500
10	ROCKER SWITCH-REVERSE
11	PANEL COMPONENTS
12	T-DC CHARGING SOCKET
13	EUROPEAN SOCKET
14	COUNTERSUNK HEAD SCREW M4X12